



*Connecting today's women to tomorrow's opportunities*

## The Mother of all Motherboards



This month the Murray Center salutes Ada Byron, Countess of Lovelace (1815-1852) -- mathematician, high-tech visionary and daughter of poet, Lord Byron. To learn more about this Founding Girl Geek, who was called 'the enchantress of numbers,' [click here](#).

Final grades are due on May 11--an auspicious date, eleven being the "number of beginning again." For some of you, the end of school is the beginning of three months of swimsuits and flip flops. For others, the end of school is the beginning of a new career...and a new wardrobe of business suits. In either case, to get from the end to the beginning, you have to pass through the circle of fire known as Final Exams. To make sure that you don't get singed in the process, we asked Dr. Phyllis Bolling, director of the NJIT Counseling Center, for some practical tips on how to handle the stress of the end-of-semester crunch...or, for that matter, any kind of stress. Take the time to take a look at what she has to say.



Nancy Steffen-Fluhr

## Nancy

## Coping With End-of-the-Semester Stress

The end of the semester is often a time of increased stress for many students. With final exams looming as well as senior projects, lab reports, papers and other assignments, stress is inevitable. Don't despair. Anxiety and stress are very common among students at this time of the semester, and there are ways to help you cope.

Stress is a part of life and reflects our body's response to challenging or threatening situations, as well as excitement. The body's response to stress and perceived danger aids us in responding quickly and successfully to a situation, and then we are able to move on to a balanced, more neutral response pattern. The stress response can help us to feel alert and focused or can allow us to react quickly and get away from a threatening situation. However, there are times when the stress response is too strong, or it occurs too often or it lingers, and this can interfere with functioning optimally. Stress can then negatively impact our ability to focus, concentrate on studying or completing assignments or our ability to remain calm enough to function on exams and "show what you know." At these times, you may feel anxious or overwhelmed and may even avoid doing work because of these feelings.



Phyllis Bolling, Ph.D.

## Murray Center Calendar

**May 3 - 9**

Final Exams  
Good luck to everyone!

**May 8, 1PM-3PM**

Interviews - Murray Center  
Ambassadors 2012-2013  
Anne Wiley Conference Room  
290 Campus Center

**May 15, 9AM**

Commencement Ceremony  
Prudential Center  
Click [here](#) for details and directions

## Murray Center Media Picks

Read all about it! A new study raises the question: [Does the very high percentage of male Wikipedia editors influence the content?](#)

Top Google Girl Geek, Marissa Mayer, lays out [a vision for where Google will be in 20 years.](#)

Sheryl Sandberg, Facebook's COO and women's advocate, takes on [the weighty subject of the 'work/life balance'](#)

Jocelyn Goldfein, director of engineering at Facebook, has a message: [GIRL GEEKS NEED TO APPLY](#)

Maria Klawe, president of Harvey Mudd College, is [not happy with current state of women and computer sciences and she's out to change the landscape.](#)

It's important to remember that there are things you can do to lower your stress levels, even during "crunch time." Click [here](#) for some tips that may help you to cope with end of the semester stress.

## Recent Events

**March 28: The 15th Annual Lillian Gilbreth Colloquium**

"Paving the Way to a Smarter World: Creativity in Engineering Education" - Santosh Kurinec, PhD

Established by the Murray Center in 1997, the annual Gilbreth Colloquium honors a pioneer in systems theory and Newark College of Engineering's first female professor, Dr. Lillian Moller Gilbreth (1878-1972). Gilbreth's 1911 book *The Psychology of Management* was the foundation for modern industrial-management theory and practice. The 2012 speaker, Santosh Kurinec, PhD, is a professor of electrical and microelectronic engineering at Rochester Institute of Technology (RIT) and a visiting scholar at IBM's T.J. Watson Research Center in New York. The 2012 Gilbreth Colloquium is co-sponsored by the Murray Center for Women in Technology, NJIT Technology and Society Forum Committee, Albert Dorman Honors College, Department of Electrical and Computer Engineering, Department of Physics and Sigma Xi. Click [here](#) to hear Dr. Kurinec's lecture.



Dr. Santosh Kurinec

**March 30-April 1: SWE Regional Conference, "SWE in the City: Energizing Your Career in NYC,"** was hosted at Columbia University. Events included seminars, workshops and a career fair with a diverse selection of companies offering onsite interviews. 15 members of NJIT's SWE Undergraduate and Graduate sections attended the three-day conference.

**April 4th: Annual Meeting: Murray Center Advisory Board.** Nancy Steffen-Fluhr and Talina Knox gave Advisory Board members Mary Anne Adjepong, Jan Bishop, Nancy Czesak, and Susan O'Donnell an overview of the 2011-2012 year at the Murray Center, including updates on NJIT's ADVANCE grant, a pilot initiative involving Murray Center Ambassadors with first year women students and projected new programs for the 2012-13 year.



SWE's Annual Networking & Award Reception

## Catch Up On Our Past E-Newsletters!

[April 2011](#)

[May 2011](#)

[Summer 2011](#)

[Fall 2011](#)

[October 2011](#)

[November 2011](#)

[December 2011](#)

[January 2012](#)

[February 2012](#)

[March 2012](#)

## Contact the Murray Center

Phone: 973.642.4885

Fax: 973.642.7205

Email: [womenscenter@njit.edu](mailto:womenscenter@njit.edu)

Website: [womenscenter.njit.edu](http://womenscenter.njit.edu)

Address: 323 Martin Luther King Blvd,  
Newark, NJ 07102



### Staff:

**Dr. Nancy Steffen-Fluhr, Director**  
973.596.3295 | [steffen@njit.edu](mailto:steffen@njit.edu)

**Talina Knox, Assistant Director**  
973.642.4671 | [knoxt@njit.edu](mailto:knoxt@njit.edu)

**Fran Sears, Special Projects Manager**  
973.596.5592 | [fsears@njit.edu](mailto:fsears@njit.edu)

**April 4th: SWE's Annual Networking & Award Reception**, featuring keynote speaker, Marion Conway, '70 graduate of Newark College of Engineering and special honoree, Rita Meyninger, PhD '58, who was presented with the Women's Pioneer Award. Dr. Meyninger is also a graduate of Newark College of Engineering and a recipient of the NJIT Lifetime Achievement Award. Several faculty and staff members were honored for their continuing support of NJIT's SWE section, including Dr. Nancy Steffen Fluhr, Director of the Murray Center and Associate Professor of Humanities and Dr. Leroy Thomas, Associate Dean of Students. The members of the recently elected 2012-2013 undergraduate and graduate executive boards were introduced.

**April 11th: NJIT's ADVANCE Brown Bag Luncheon.** Throughout the Spring 2012 semester, NJIT's ADVANCE has initiated a pilot mentoring program with junior faculty. The third in the series, this event featured issues of promotion and tenure, with senior faculty on hand to provide insight and strategies. The event was hosted by NJIT senior faculty, Katia Passerini, PhD and Nancy Steffen Fluhr, PhD.

**April 23rd: NJIT's ADVANCE Brown Bag Luncheon.** Strategies for innovative teaching, student engagement, as well as research/publication strategies to identify the "right" journals and "survive" the review process were the topics discussed at the final session in this series. Once again, the event was hosted by Katia Passerini, PhD and Nancy Steffen Fluhr, PhD. A debriefing and follow up meeting to review the program will be held in May.

**April 27th: Murray Center Team Gray Ambassadors** Kristen Roque and Reem Salem celebrated the end of the Spring 2012 semester with Team Gray first year students, Roseanne George and Whitney Yang. Team Gray had an outstanding year in the Murray Center's Got Game competitions. Congratulations Team Gray for taking first place!!



Kristen Roque, Roseanne George, Whitney Yang, and Reem Salem

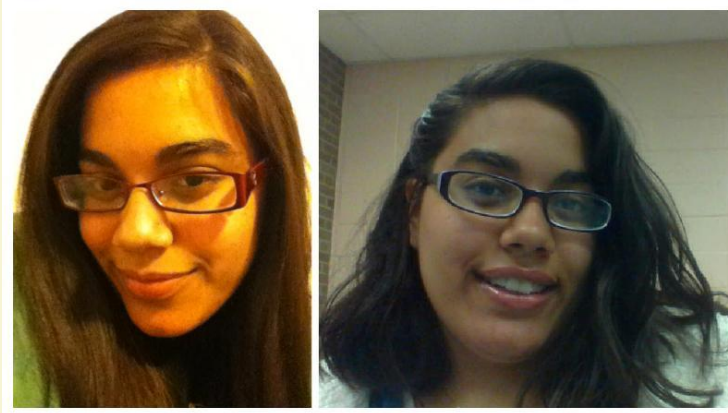
## Women to Watch

### Meet Chelsea Ramos:

A first year student at NJIT majoring in Environmental Engineering, Chelsea is also involved with the Locks of Love Foundation, an organization that provides wigs and other hairpieces for children affected with diseases that result in hair loss.



This is something that hits close to home for Chelsea. One of her aunts is a leukemia survivor and another aunt was recently diagnosed with breast cancer. Both women have undergone extensive chemotherapy, causing them to lose their hair. Their experiences gave Chelsea the idea to grow out her own hair and donate it to the Locks of Love Foundation.



Chelsea Ramos before and after

"I am very proud of my aunts because they put everything on hold to fight cancer and are very brave," Chelsea says. "I think they look beautiful the way they are with or without hair, with or without cancer, but I realize that people undergoing cancer treatment want to feel attractive. I know that Locks of Love would put my hair to good use. I am donating 12 inches of my hair and I do not regret cutting it for one second. I am happy to make a difference in someone's life, even if it is a small gesture, like giving them a full head of hair."

Yay, Chelsea!

#### Meet Priya Radhi Santhanam:

"Ever since I can remember I always loved school," says the recently named Newark College of Engineering's 2012 Outstanding Graduate Student. "Perhaps that's why after I get my PhD. I want to be a professor."

And clearly, Priya is well on her way. As a doctoral candidate in chemical engineering, Priya maintains a 3.9 GPA and has presented her research at 11 academic conferences and published three papers. Her presentations have won first place awards from the American Institute of Chemical Engineers and the American Institute of Aeronautics and Astronautics. Here at NJIT, Priya was awarded the Constance Murray Scholarship for Outstanding Graduate Women Student, an NJIT Provost Fellowship and a Minerals, Metals and Materials Society Student Travel Grant. This summer Priya will intern with Exxon Mobil's Upstream Research Company, which will give her the opportunity to compare corporate and academic research. In addition, as the newly elected president of NJIT's SWE Graduate Section, she will be developing a range of initiatives, including tutoring programs. She was recently awarded the SWE Outstanding Service Award and was appointed to the SWE National Graduate Task Force Committee, a position that will allow her to help formulate national SWE policy.



Priya Radhi Santhanam presented with NCE's Outstanding Graduate Student by Dean Sunil Saigal

# Scholarships, Research Experiences for Undergraduates (REU) and Other Resources

**Attention Incoming Women Students:** If physics is your passion and your prospective major, the **Jean Gordon Thomas Memorial Scholarship** will fully fund a summer research experience in the physics lab of your choice. Click [here](#) for more details.

**Galactic Unite STEM Scholarship Program** announces it will award its first scholarships this fall. The program is a joint initiative between Virgin Galactic and Virgin Unite and will be managed by the United Negro College Fund. Application deadline is May 31, 2012.

Click [here](#) for information and an application for a Galactic Unite Bytheway Scholarship, and [here](#) for a Galactic Unite Brightman Scholarship.

**The Center for Computational Sciences and Engineering (CCSE)** at Lawrence Berkeley National Laboratory has three post-doctoral employment opportunities. Check out this [link](#) for more information.

**The American Society for Engineering Education (ASEE)** is a non-profit organization which brings together engineering educators from all of the engineering and engineering technology fields to collaborate on solutions to promote excellence in instruction, research, public service, and practice. Part of their mission is to connect students on all academic levels with fellowship programs. For more information:

[Undergraduates](#)

[Graduates](#)

[Post Doctoral](#)

[Summer Faculty](#)

[International Fellowships](#)

**The American Mathematical Society** has an impressive roster of corporations and organizations that offer internships and co-op opportunities. While they counsel that most require fall or winter applications for summer positions, this is a list well-worth exploring. For more information click [here](#).

And remember...**New Jersey's Higher Education Student Assistance Authority (HESAA)** is a valuable source of information about financial assistance for college students and their families. Log on [here](#).

